

OFFICIAL SYSTEM MAP

BURLEY HIGHWAY DISTRICT

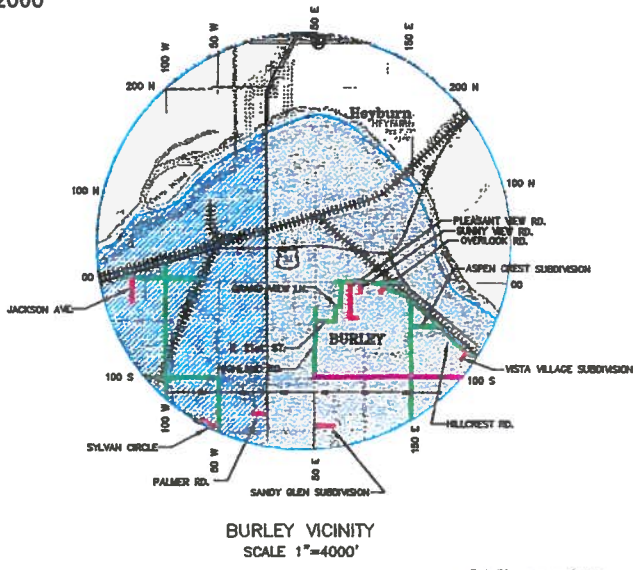
CASSIA COUNTY, IDAHO



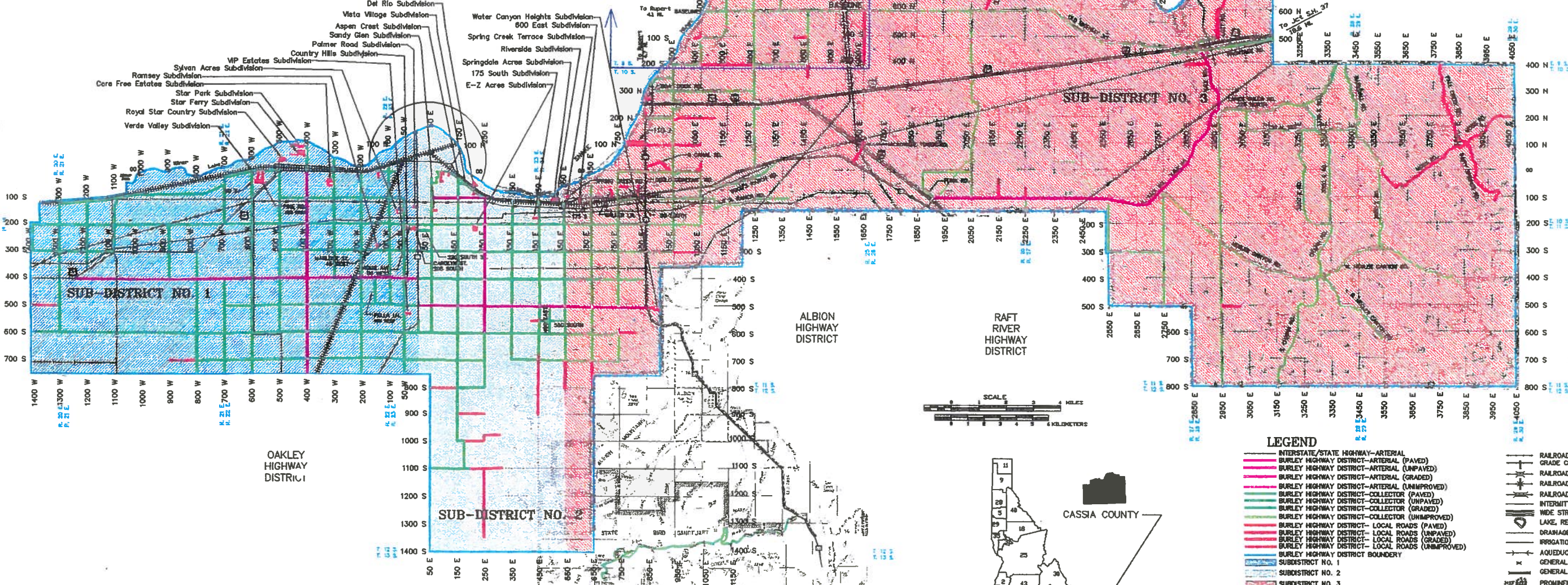
Signature
DISTRICT MANAGER

MANAGEMENT TEAM
ADMINISTRATION & FISCAL CONTROL
CONSTRUCTION OPERATIONS COORDINATOR
MAINTENANCE OPERATIONS COORDINATOR
CONSTRUCTION & MAINTENANCE COORDINATOR
SHOP EQUIPMENT COORDINATOR

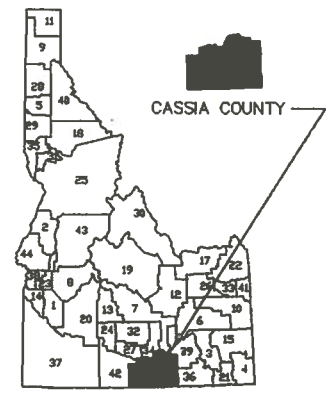
JILLIE FAIRCHILD
KENT WETZSTEIN
JELLY PASKETT
BOB CASPER
HOW BRADY



MINIDOKA COUNTY
MINIDOKA COUNTY HIGHWAY DISTRICT
GRID NUMBERING SYSTEM



RECEIVED
MAR 03 2015



- LEGEND**
- INTERSTATE/STATE HIGHWAY-ARTERIAL
 - BURLEY HIGHWAY DISTRICT-ARTERIAL (PAVED)
 - BURLEY HIGHWAY DISTRICT-ARTERIAL (UNPAVED)
 - BURLEY HIGHWAY DISTRICT-ARTERIAL (GRADED)
 - BURLEY HIGHWAY DISTRICT-ARTERIAL (UNIMPROVED)
 - BURLEY HIGHWAY DISTRICT-COLLECTOR (PAVED)
 - BURLEY HIGHWAY DISTRICT-COLLECTOR (UNPAVED)
 - BURLEY HIGHWAY DISTRICT-COLLECTOR (GRADED)
 - BURLEY HIGHWAY DISTRICT-COLLECTOR (UNIMPROVED)
 - BURLEY HIGHWAY DISTRICT-LOCAL ROADS (PAVED)
 - BURLEY HIGHWAY DISTRICT-LOCAL ROADS (UNPAVED)
 - BURLEY HIGHWAY DISTRICT-LOCAL ROADS (GRADED)
 - BURLEY HIGHWAY DISTRICT-LOCAL ROADS (UNIMPROVED)
 - BURLEY HIGHWAY DISTRICT BOUNDARY
 - SUBDISTRICT NO. 1
 - SUBDISTRICT NO. 2
 - SUBDISTRICT NO. 3
 - FEDERAL AID PRIMARY SYSTEM
 - FEDERAL AID SECONDARY SYSTEM
 - INTERSTATE NUMBERED HIGHWAY
 - U.S. NUMBERED HIGHWAY
 - STATE NUMBERED HIGHWAY
 - END OF FEDERAL AID SYSTEM
 - HIGHWAY WITH FULL CONTROL OF ACCESS
 - STATE COLLECTOR
 - INTERCHANGE-HIGHWAY UNDER
 - INTERCHANGE-HIGHWAY OVER
 - HIGHWAY GRADE SEPARATION
 - RAILROAD
 - RAILROAD GRADE CROSSING
 - RAILROAD ABOVE
 - RAILROAD BELOW
 - RAILROAD BRIDGE
 - INTERMITTENT STREAM
 - WIDE STREAM
 - LAKE, RESERVOIR OR POND
 - DRAINAGE DITCH
 - IRRIGATION CANAL
 - AQUEDUCT TUNNEL OR SIPHON
 - GENERAL BRIDGE (OVER 200 FT.)
 - GENERAL BRIDGE (OVER 200 FT.)
 - PROMINENT ELEVATION, BUTTE
 - MOUNTAINS OR RIDGES
 - CANYON WALL OR MESA
 - TRANSMISSION LINE
 - PIPE LINE, GAS
 - PIPE LINE, OIL

THIS MAP IS FOR INFORMATIONAL PURPOSES ONLY. THE BURLEY HIGHWAY DISTRICT OFFICE IS NOT RESPONSIBLE FOR ANY ERRORS OR OMISSIONS. THE BURLEY HIGHWAY DISTRICT OFFICE IS NOT RESPONSIBLE FOR ANY ERRORS OR OMISSIONS.

REVISION	DATE	BY	COMMENTS